



**Bijur Chassis Lubricator Serial Number Tag**

\$12.50  
BIJ-0002

Duplicate of original aluminum tag for Bijur pumps as used on L-29 Cord, Model X Duesenberg and other fine automobiles of the 1920's and 1930's. Attaches to the bracket on the reservoir and is ready to install.



**Bijur Reservoir Tank Bottom Cap**

\$84.00  
J-6010-9

Fully machined bronze casting, fits on the threaded extension on the bottom of many tanks.

Has 1/8" pipe thread on the hex end, 1 11/16-18 thread size on the large end.

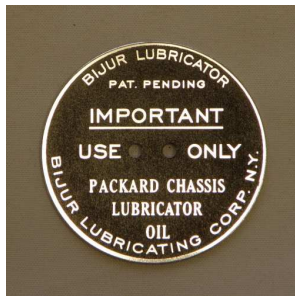


**Bijur Chassis Lubricator Tag for Packard**

\$34.00  
P-0017

Aluminum tag for the filler cap, has raised letters and a black background. Special tag as used on early 1930's Packards.

Measures 1 5/8 OD.



**Bijur Lubricator Double Outlet Pump Bottom**

\$63.00  
BIJ-0001

Bronze casting for pumps with 1 5/16 bottom neck.

Has 1 5/16-20 I.D. thread to screw on neck and has two outlet holes with 5/16-24 thread.



**Bijur Chassis Lubricator Cap Tag**

\$34.00  
J-6010-10

Aluminum tag for the filler cap on Bijur Chassis Lubricators. Has raised letters and a black background.

Measures 1 5/8 OD.



**Bijur Lubricator 5/32 Copper Tubing - 12 Ft.**

\$45.00  
J-6030

12' roll of 5/32" OD fully annealed copper tubing specifically designed for Bijur lubrication systems.

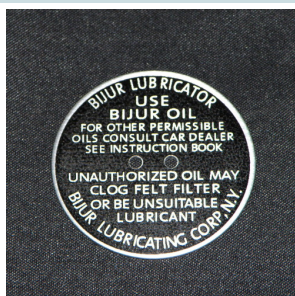


**Bijur Chassis Lubricator Cap Tag, 1 5/8**

\$34.00  
TAG-0046

Aluminum tag for the filler cap on Bijur Chassis Lubricators used on Stutz DV-32 and other cars with a 1 5/8 DIA. chassis lubricator cap.

Material: Aluminum; Finish: Natural; OD: 1.447; Thickness: .032; Holes: .090, centers .250



**5/32 Brass Female Compression Nut**

\$1.50  
J-6038

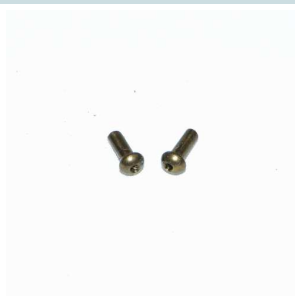
5/32 ID brass fitting with 5/16-24 thread and 3/8 hex for 5/32 Bijur lubrication tube.



**Bijur Chassis Lubricator Cap Rivets**

\$3.00  
J-6010-11

Special rivets used to hold the tag on the filler cap. These are drilled through to provide venting for the reservoir tank. Sold as a pair.



**5/32 Brass Male Compression Nut**

\$2.50  
J-6039

5/32 ID brass fitting, 5/16-24 NF thread and 3/8 hex for 5/32 Bijur lubrication tube.





**5/32 Brass Ferrule**

\$2.00

J-6040

Brass ferrule for 5/32 Bijur tubing. For use with male or female line nut.



**Bijur Lubricator Reservoir Attaching Strap**

\$46.00

J-6010-7

Steel strap to support the bottom of the reservoir tank when mounting the tank on firewall.



**Bijur Lubricator 90° Brass Elbow Adaptor**

\$8.75

J-6027

Brass fitting for 5/32 Bijur tubing. Has 1/8 NPT male thread.



**Bijur Reservoir Attaching Bolt**

\$8.00

J-6010-8

Special tee bolt to fit in the reservoir attaching strap 5/16-24 thread. Has a narrow square head to fit inside the strap.



**Bijur Lubricator Swivel Attachment**

\$37.00

J-6055

Used to adapt stationary Bijur tube to rotating device such as shock arms.

Steel fitting, 1/8 pipe female thread for Bijur fitting & 7/16-20 male thread to screw into device.



**Bijur Lubricator Felt Support**

\$10.75

J-1169

New die cast part for use as a filter support in the lubricator pump and in the bottom cap of the reservoir tank. Measures 1 5/8 OD.



**Bijur Lubricator Tee Adaptor**

\$20.75

J-6020

1/8 male NPT to 5/32 bijur tube. Used in conjunction with the metering unit.



**Bijur Lubricator Pump Felt Filter**

\$6.50

J-1168

For use in all lubricator pumps and reservoir bottom caps.

Measures 1 7/16 OD and 3/16 thick.



**Bijur Lubricator Metering Unit 90° Elbow**

\$13.50

J-6028

90° brass elbow for Bijur metering unit with 1/8" NPT male and female threads.



**Bijur Lubricator Felt Filter for Small Tanks**

\$3.50

BIJ-0004

Tank filter for small Bijur tanks. Measures 1.093 O.D. x .187 thick.





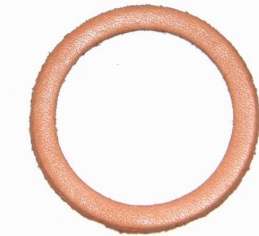
**Bijur Lubricator Leather Sealing Washer for Tank Cap**

\$3.00  
J-6010-6  
Precision cut leather sealing washer to fit in the filler cap.



**Bijur Lubricator Leather Seal for Small Tank Cap**

\$3.50  
BIJ-0003  
Precision cut Sutherland leather & felt seal for Bijur tanks using small caps.  
  
Measures 1.500 O.D. x 1.187 I.D. x .078 thick.



**Reservoir Bottom Cap Gasket**

\$2.00  
J-6010-12  
Diecut gasket for sealing the reservoir bottom cap (#J-6010-9) and the felt support (#J-1169) to the reservoir tank. This is Bijur part #A-2732.



**Bijur Lubricator Bottom Cap Gasket for Small Tanks**

\$1.50  
BIJ-0005  
Sutherland leather & felt flexoid washer for small Bijur tanks. Measures 1.250 O.D. x .062 I.D. x .031 thick.



**Bijur Lubricator Leather Cup Seal for Small Tanks**

\$10.50  
BIJ-0006  
Leather cup seal for small 1 1/8 DIA Bijur pumps.  
  
Specs: OD: 1 1/8; ID: 3/4; Height: .275



**Bijur Lubricator 4-Way Junction to Female Junction**

\$45.00  
J-6019  
Junction to join four 5/32 Bijur tubes to a metering unit.



**Bijur Lubricator J.H.J. 3-Way Junction**

\$45.00  
J-6023  
Cast bronze 3-way junction for 5/32 Bijur tube. Has 1/4 cross hole to mount on the frame.



**Bijur Lubricator J.H.K. 4-Way Junction**

\$45.00  
J-6024  
Cast bronze 4-way junction for 5/32 Bijur tube. Has 1/4" cross hole to mount on the frame.





**Bijur Lubricator Pump Rebuilding Service**

Varies  
Rebuilding Service

Classic & Exotic Service, Inc. specializes in the restoration of chassis lubricator fuel pump assemblies used on Duesenberg Model J engines.

**Rebuilding  
Service**

Our rebuilding service includes:

- # Complete disassembly and cleaning
- # Replacement of all cracked and broken castings with new bronze and iron castings
- # Replacement of diecast internal gear supports in timer gear case with iron gear supports
- # Installation of a new bronze fuel pump bellows
- # Replacement of fuel pump valves and springs if required
- # Repair of worn fuel pump actuating cam lobes
- # Replacement of worn fuel pump cam follower if required
- # Installation of new Bijur pump seal and filter if required
- # Complete assembly and testing

Price is dependent upon condition. For more information:  
Call 1-248-362-2097 Monday thru Friday 8AM - 5PM EST or  
Email Parts@classicandexotic.com

**Bijur Lubricator FTA-3 Drip Plug**

\$30.00  
J-6014

Bijur chassis lubricator FTA-3 drip plug. Bijur part number B1073.

Material: Brass; Hex: 3/8; OAL: .837



**Bijur Lubricator FTA-4 Drip Plug**

\$30.00  
J-6015

Bijur Chassis Lubricator FTA-4 drip plug. Bijur part number B1075.

Material: Brass; Finish: Natural; OAL: .830; Hex: 3/8



**Packard Chassis Lubricator Cap**

\$125.00  
P-0123

Chassis lubricator cap for adapting the Bijur fitting to the lubricator tank. For use on Packard 1922-32.



Material: Brass; Finish: Natural;  
Thread: Outer 1 3/4-18, inner 3/8-24;  
Hex: 3/4 x .355; OD: 1.745; ID: 1 1/2, 1.300; Height: .800

**3/16 Bijur Lubricator Flexible Hose, Pierce Arrow**

\$65.00  
MISC-0166

Bijur chassis lubricator flexible hose for use with 3/16 system. Used on 1928 Pierce Arrow and other makes and years of automobiles. Can be produced in any required length. Overall length is measured from the tip/end of one fitting to the tip/end of the other fitting.



3/16 Brass compression sleeve: 9/32 OD, 3/16 wide; 3/16 Brass hose adapter: 3/8 Hex, 17/32 OAL, 3/8-24 x 5/16 thread

**Bijur Lubricator Pump Filter Support**

\$8.00  
BIJ-0007

Copper screen filter support for Bijur chassis lubricator pumps as used on many prewar automobiles. Bijur part number A2936.



Material: Copper; OD: 1.250; Thickness: .020

**Bijur Lubricator Pump Regulator Guide Screw**

\$8.00  
J-1180

Regulator guide screw for Bijur Chassis Lubricator pump as used on Duesenberg Model J.



Material: 12L14 Steel; Finish: Natural;  
Thread: 1/4-24; Thread length: .385;  
Hex: .4375; OAL: .725; Length under head: .530; Shaft OD: .178



### Bijur Lubricator Pump Regulator Stop Pin

\$8.00

J-1181-A

Stop pin for the regulator in a Bijur Chassis Lubricator pump as used on Duesenberg Model J.

Material: 12L14 Steel; Finish: Natural;  
Thread: 3/8-16; Thread length: .315;  
Head: 9/16 Hex x .280; Length under head: .762; OAL: 1.042



### Bijur Lubricator Vacuum Chamber Membrane

\$10.00

BIJ-0008

Fabric reinforced silicone rubber membrane for vacuum operated Bijur pumps as used on 1934 Packard, Auburns using vacuum operated pumps and others.

Material: Fabric reinforced silicone rubber; OD: 2.875; ID: .375; Thickness: .032



### Bijur Lubricator Signal Box Contact Arm Screw

\$5.50

J-1187

Signal box contact arm screw for Bijur Chassis Lubricator system as used on Duesenberg Model J.

Material: 12L14 Steel; Finish: Natural;;  
Thread: 8-32; Thread length: .350;  
Head OD: .265; Head height: .130;  
Length under head: 1.160; OAL: 1.290



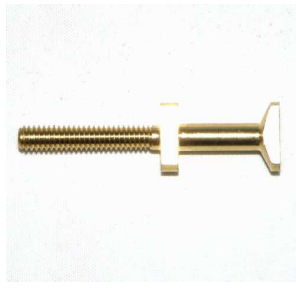
### Bijur Lubricator Signal Box Terminal Post

\$15.00

J-1177

Brass terminal post used in the signal box cover on the Bijur chassis lubricator system for Duesenberg Model J.

Material: Brass; Finish: Natural;  
Thread: 8-32; Thread length: .828;  
OAL: 1.625; Head: .240 x .437 x .120 high; Mid shaft: .174 OD, .500 long; Mid step: .240 x .437 x .110 high



### Bijur Lubricator Pump Cylinder, Duesenberg

\$75.00

J-1166

Steel threaded cylinder used in the Bijur chassis lubricator pump system on Duesenberg Model J.

Material: Steel; Finish: Natural;  
Thread: 1-11/16-18; Thread length: .400; OD: 1.6875; ID: 1.500; Height: 1.474; Groove: .060

